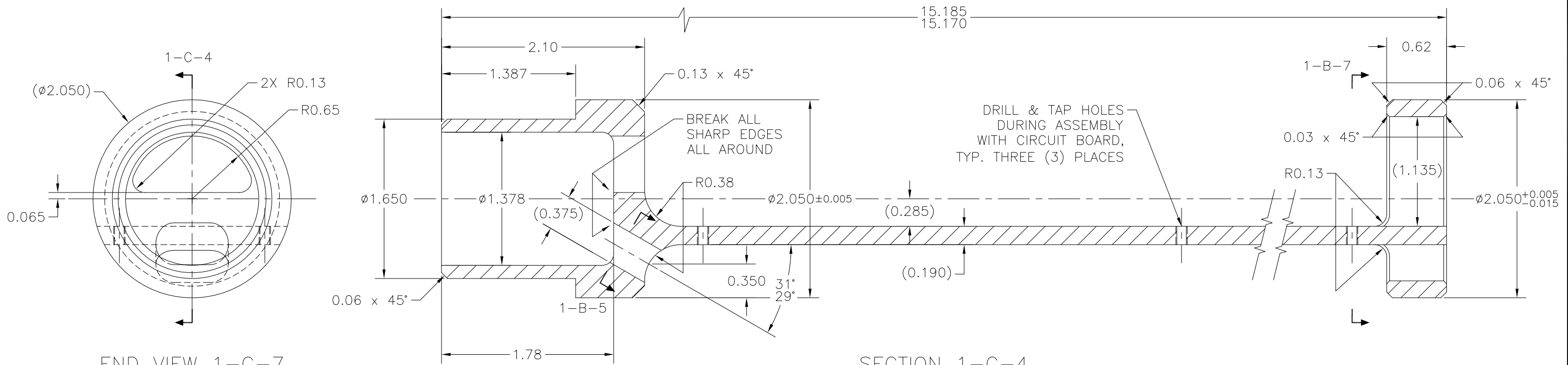


NOTES:

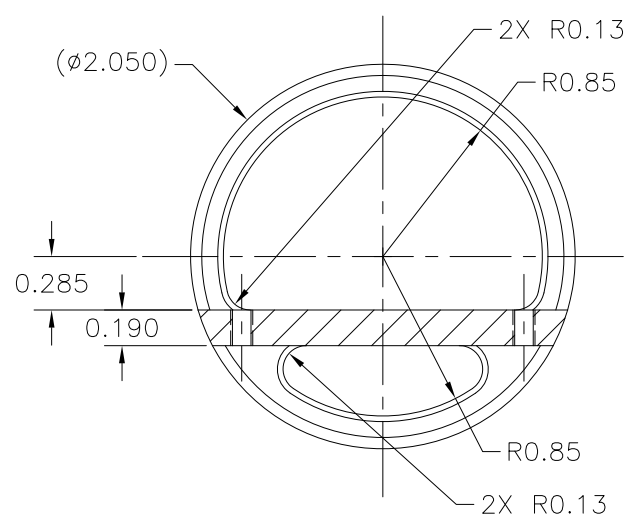
1. MATERIAL: BAR, 6061-T6 ALUMINUM ALLOY, $\phi 2.050 \times 15.185$ LG.
2. HEAT TREAT: NONE
3. SURFACE TREATMENT: NONE
4. WEIGHT: 2.21 LBS.

REVISIONS				
NO	DESCRIPTION	DATE	BY	APR/DATE
1	REFORMAT	08/17/10		

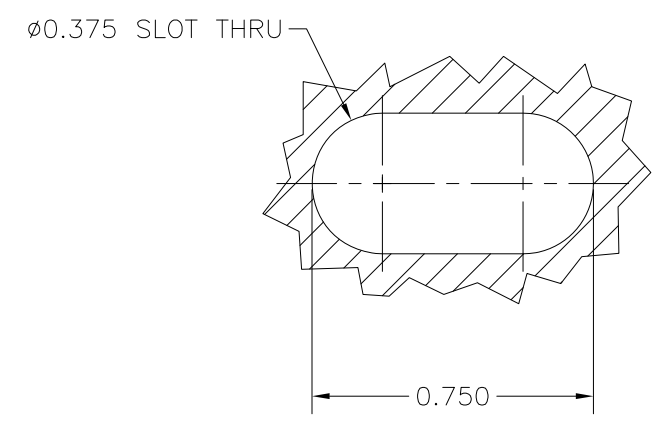


END VIEW 1-C-7
CIRCUIT BOARD CARRIER

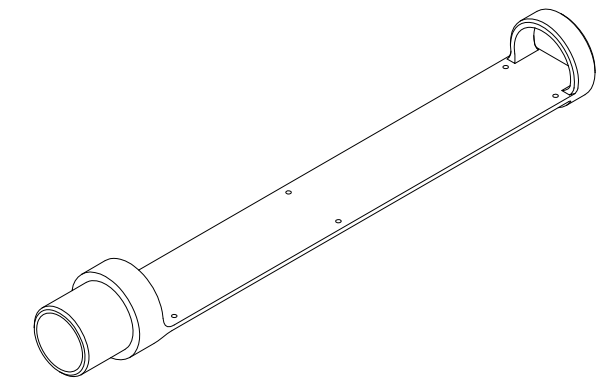
SECTION 1-C-4
REF. 1-D-7



SECTION 1-B-7
REF. 1-D-2



SECTION 1-B-5
SLOT DETAIL
REF. 1-C-5



PICTORIAL 1-B-2
CIRCUIT BOARD CARRIER
N.T.S.

<p>TOLERANCES: UNLESS OTHERWISE SPECIFIED</p> <p>0.X ± 0.030 0.XX ± 0.010 0.XXX ± 0.005</p> <p>ANGLES ± 1/2° BREAK EDGES 0.015 x 45° MIN.</p> <p>FINISH 125 ✓</p> <p>ALL DIMS ARE IN INCHES, UNLESS NOTED OTHERWISE.</p>	<p>PROPRIETARY NOTICE THIS DRAWING AND THE INFORMATION IT CONTAINS ARE CONSIDERED CONFIDENTIAL, AND MAY NOT BE REPRODUCED, COPIED OR USED, IN PART OR IN WHOLE, WITHOUT PRIOR WRITTEN CONSENT.</p>	<p>Integrated Ocean Drilling Program TEXAS A&M UNIVERSITY 1000 DISCOVERY DRIVE COLLEGE STATION, TX 77845</p>			
		<p>TITLE: CIRCUIT BOARD CARRIER</p>		<p>ASSEMBLY: 3^{ERS}</p>	
<p>SHEET: 1 OF 1</p>		<p>SCALE: 1:2</p>		<p>DATE: 07/20/10</p>	
<p>BY: KM</p>		<p>APPROVED: TP</p>		<p>CHECKED: JCS</p>	
<p>SIZE: D</p>		<p>P/N: ERS-021</p>		<p>REV: 1</p>	